



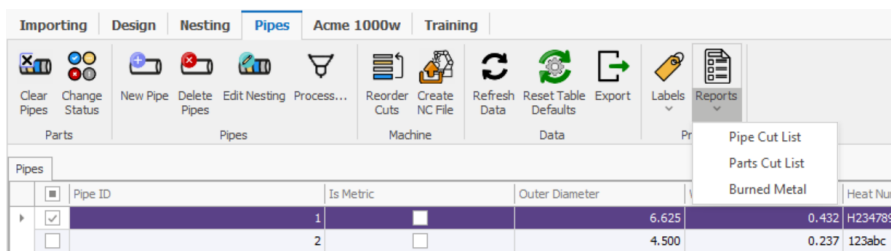
# Introduction to Reporting

## Introduction

Enterprise contains a set of reports that can be modified and personalized to meet your requirements. Reports can be copied and edited with advanced formatting, scripting, or data from external sources. Each report can be configured with its own printer and export settings.

## Reports

Reports are available from the Reports button of the Print group in each tab ribbon. The context of each tab determines which reports may be available, i.e. the Design tab does not provide reports for pipes.



## Report Types

Enterprise currently provides the following built-in reports. These reports are stored in the Reports folder located in the "PypeServer Documents" share and backup copies are stored locally under the PypeServer application install folder. Do not modify these default reports as they may be revised and overwritten during updates.

### Pipes Cut List

A list of nested parts in cut order for each selected pipe in the report. The default report provides basic pipe and part information, a part image, and QR code.

File name: Pipe\_Cutlist\_Report.repx

### Parts Cut List

A list of cuts in cut order order each selected part in the report. The default report provides basic part and cut information, a part image, and a QR code.

File name: Part\_Cutlist\_Report.repx

### Burned Metal

A summarized report of the metal burned of each cut and part for each selected pipe in the report. The default report provides basic details for each pipe, part and cut, and summarizes the totals.

File name: Burned\_Metal\_Report.repx



## Report Settings

Report print and export settings are found in the Printing tab of the Settings window. Each report has a tab that allows you to set the report template, where to print or export the report, and whether to display a report preview or print dialog before printing. There are buttons along the right side for printing test reports, a report designer, access to the report templates folder, and help documentation. A thumbnail of report is displayed of the report snapshot using sample data from previous edits.

The screenshot shows the 'System Settings' window with the 'Printing' tab selected. The 'Pipe Cut List Report' configuration is displayed. On the left, a sidebar lists 'Labels' (Part Labels, End Cut Labels, Scrap Part Labels, Drop Pipe Labels, Stock Pipe Labels) and 'Reports' (Pipe Cut List Report, Parts Cut List Report, Metal Burned Report). The main area shows the 'Pipe Cut List Report' settings. The 'Template' is set to 'Pipe\_Cutlist\_Report'. The 'Export' checkbox is unchecked, and the 'Print' checkbox is checked. The 'Print when cutting' checkbox is also checked. The 'Show Print Preview' checkbox is unchecked, 'Show Windows Print Dialog' is checked, and 'Show confirmation dialog' is unchecked. The 'Sample data from' section has 'Database' selected and 'Schema' unselected. On the right, there are icons for printing, report designer, templates folder, and help. Below the settings, a preview of the 'Pipe Cut List' report is shown. The preview includes the PypeServer logo and address, followed by two tables of sample data.

Pipe ID	Length	OD	WT	Material	Heat Number	Pipe Notes
421542	10' 0"	6 5/8"	0.280"		ABC-123	

Order	Customer	Job	Design	Spool ID	Spool Sheet	Length	Y Start
1	PypeServer	Application Testing		Part seam locked	test	10"	9' 2"

## Printing

To print a report, select the items in the grid to include and then select the desired report from the Reports button. The report settings will determine what report template to use for the selected data and where to print or export the finished report. The preview or print dialogs will display before printing if they have selected in the report settings.

## Modifying Reports

Modifying existing reports or creating new ones is an advanced subject that is outside the scope of this document and requires report designer and scripting skills. Enterprise uses a 3rd party reporting subsystem from DevExpress with extensive training and reference documentation available for review.

The PypeServer Report Designer Reference:

[https://pypeserverdocs.blob.core.windows.net/enterprise/\\_site/interface-elements-for-desktop/articles/report-designer/report-designer-for-winforms.html](https://pypeserverdocs.blob.core.windows.net/enterprise/_site/interface-elements-for-desktop/articles/report-designer/report-designer-for-winforms.html)

Third party documentation and training:

<https://docs.devexpress.com/XtraReports/10715/desktop-reporting/winforms-reporting/end-user-report-designer-for-winforms>

